



Ospedale  
di Cremona

Sistema Socio Sanitario



Regione  
Lombardia

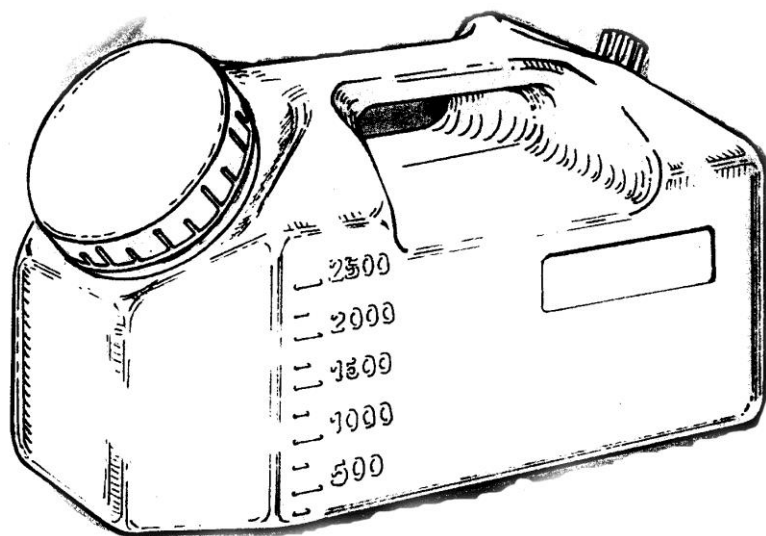
ASST Cremona

## 24-HOUR URINE

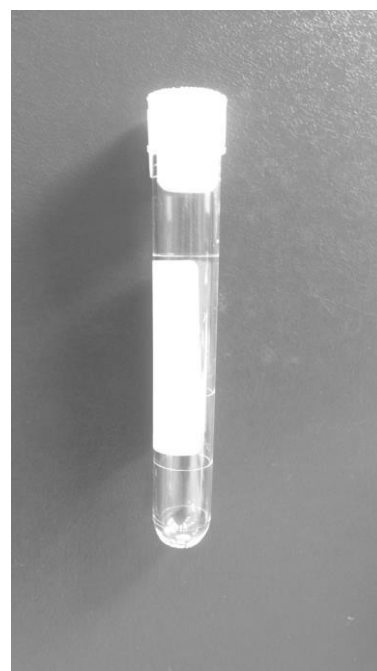
### COLLECTION METHOD

1. Discard the first morning urine (which should not be included in the collection).
2. Then begin collecting 24-hour urine, including the next morning's urine, in a large, graduated plastic container (**container 1**) purchasable from a pharmacy.
3. Check the total amount of urine collected.
4. Write the amount of urine collected on the label of a small container (**container 2**), available free of charge at your chosen sample collection point or purchasable at a pharmacy.
5. Pour some of the urine from the large container (**container 1**) into the small container (**container 2**), filling it halfway.
6. Deliver the small container (**container 2**), after screwing it tightly, to your chosen collection point during opening hours.

**THE SAMPLE COLLECTION CENTER WILL NOT ACCEPT LARGE  
CONTAINERS BUT ONLY SMALL CONTAINERS**



**Container 1**



**Container 2**